



BARUFFALDI

MACHINE TOOL COMPONENTS

Tool Holder Disc **guide**

Catalogo Dischi Portautensili



The Partner for Machine Tool Builders

WWW.BARUFFALDI.IT



Rev. 01/2022

More than 90 years of Italian mechanical excellence

1927 FOUNDATION



Eng. Cesare Boffelli

Baruffaldi was founded in Milano (Italy) by Cesare Boffelli, a qualified mechanical engineer, in 1927.

1955 BRAKES & CLUTCHES



Baruffaldi Catalog '50s

In the '50s Baruffaldi expanded its business area manufacturing brakes and clutches for several industrial applications

1975 MACHINE TOOLS



PPL "Galaxy" Lathe '70s

In the '70s it began the production of components for Machine Tool industry

2007 PRODUCTION UNITS



Baruffaldi Production Units

Baruffaldi reorganized the company into 2 new production units located in Milan area. The total covered area is 25.000sqm

1932

The Company started the production of brakes for motorcycles in the '30s



Motorcycle "Certum" '30s

MOTORCYCLE

1972

With high technology knowledge in brake and clutches The Company became a partner of truck manufacturers



Fiat Truck '70s

INDUSTRIAL VEICHLES

1984

Baruffaldi entered the agricultural and textile machines industries



Agricultural Tractor '80s

AGRICULTURAL & TEXTILE

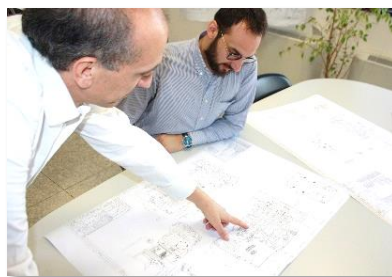
2013

Baruffaldi design a new line of 2 and 3 stage reducers for various applications as food machinery



REDUCERS

Today Baruffaldi, with over 90 years of experience, is one of the leaders in the Machine Tool Industry offering high quality products and services worldwide.



Baruffaldi, The Partner for Machine Tool Builders

Tool Holder Disc Types

Modelli Dischi portautensili

All the Tool Disc in this catalog are indicated as reference and the production availability and suitability with the application has to be checked with baruffaldi sales Office

VDI Axial Discs
Dischi Assiali VDI



PG. 5-10

VDI Axial Discs with double PCD
Dischi VDI assiali doppio interasse



PG. 11

VDI Axial Discs + Side Slots
Dischi Assiali VDI + sedi fresate laterali



PG. 12

VDI Axial Discs + Slots
Dischi Assiali VDI + sedi fresate



PG. 13

VDI Radial Discs
Dischi Radiali VDI



PG. 14-15

BMT Radial Discs
Dischi Radiali BMT



PG. 16

Capto Discs (Radial or Axial)
Disco con sedi Capto (Radiali o Assiali)



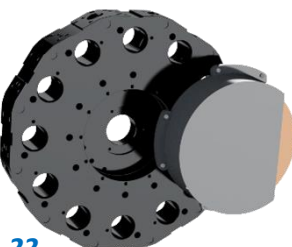
PG. 17-18-19

Polygonal Slotted Discs
Dischi poligonali a sedi fresate

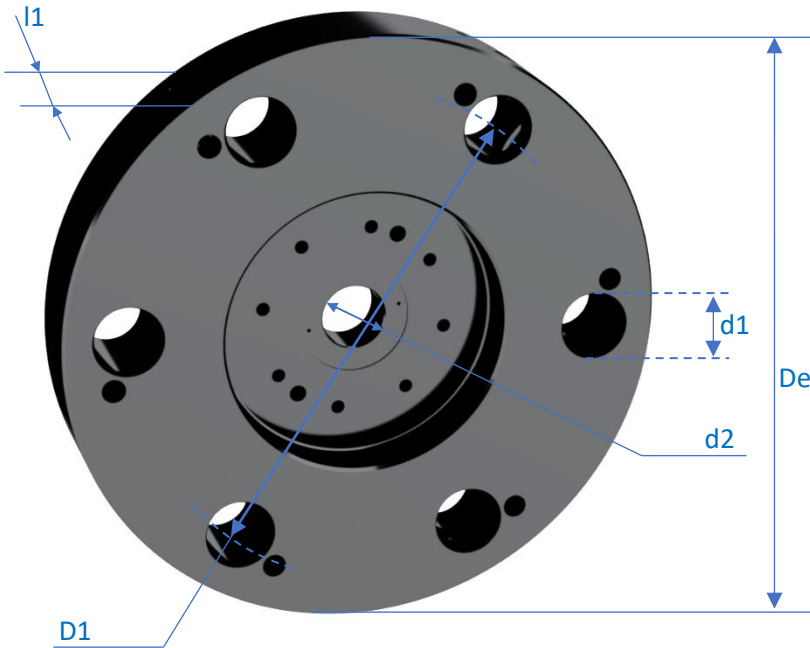


PG. 20-21

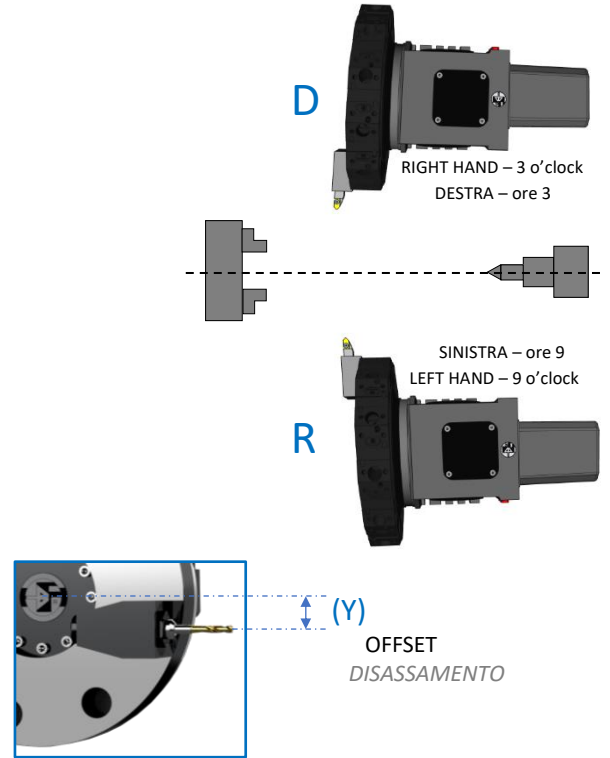
VDI Discs with Grinding Units
Dischi VDI con Moduli di Rettifica



PG. 22



WORKING POSITION



Code Codice	VDI	PCD	Y	N°	Turret	S	F	Drawing	PCD	De	d2	l1	Min	NOTE
	d1	D1	Offset											
	mm			Pos.	Type	D	R	Disegno	mm					
80.120.02401	40	270	00	06	120	D	F	024		340	30	65		
80.120.03301	30	200	00	06	120	D	F	033		260	30	57		
80.120.03401	30	200	00	06	120	S	F	034		260	30	57		
80.120.04001	40	230	00	06	120	D	F	040		290	65			
80.160.06901	40	270	35	06	160	D	R	069		335	40	77,7		
80.200.08401	40	272	00	06	200	D	F	084		332	50	78		
80.200.09501	50	300	00	06	200	S	F	095		375	50	82		
80.200.10901	40	340	00	06	200	S	R	109		410	50	66		
80.200.12001	40	340	32	06	200	S	F	120		410	50	66		
80.200.16201	50	340	100	4	250	D	F	162		420	63	82		

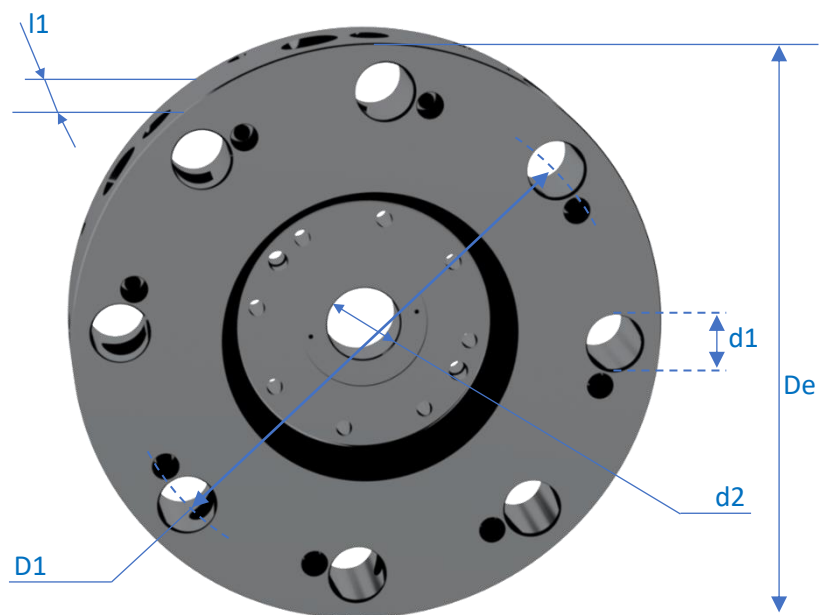
F Suitable only for turrets with static tools
Utilizzabile solo per torrette con utensili fissi

R Suitable for turrets with static tools and driven tools
Utilizzabile per torrette con utensili fissi e rotanti

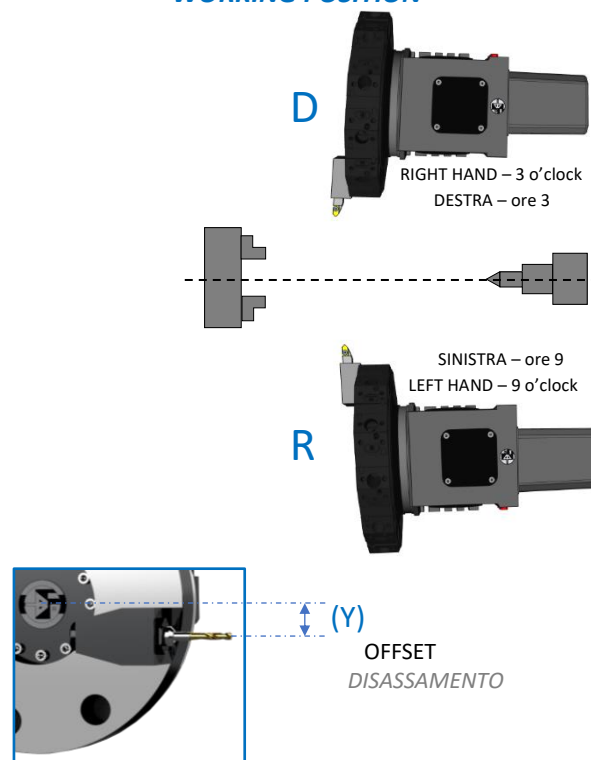
On demand are available many other Tool Disc type or for special applications. Do not hesitate to contact our sales office.
The List above indicates discs already produced but available for sale only at its sole discretion of Baruffaldi s.p.a., for this reason please contact our Sales Office for any question or request.

VDI Axial Tool Disc 8 positions for tool-holder as per ISO 10889 (ex DIN 69880)

VDI Dischi Assiali 8 posizioni per utensili a norma ISO 10889 (ex DIN 69880)



WORKING POSITION



Code Codice	VDI	PCD	Y	N°	Turret	S	F	Drawing	PCD	De	d2	l1	Min	NOTE
	d1	D1	Offset											
			mm						mm					
80.0100.01101	20	190	15	08	100	D	F	011		240	25	42		
80.0100.01201	20	190	15	08	100	D	R	012		240	25	54		
80.0120.00601	20	225	00	08	120	D	R	006		275	30	44		
80.0120.00801	25	225	00	08	120	D	R	008		275	30	52		
80.0120.01101	30	240	00	08	120	D	F	011		290	30	59		
80.0120.01601	30	240	00	08	120	S	F	016		290	30	59		
80.0120.01801	30	205	00	08	120	S	F	018		255	30	59		
80.0120.01901	30	190	00	08	120	D	F	019		240	30	57		
80.0120.02301	30	225	00	08	120	S	R	023		275	30	71		
80.0120.02501	30	200	00	08	120	D	F	025		260	30	58		
80.0120.02701	30	240	00	08	120	S	R	027		290	30	71		
80.0120.02801	30	240	00	08	120	D	R	028		290	30	71		
80.0120.03101	30	240	15	08	120	D	F	031		290	30	59		
80.0120.03601	30	225	17	08	120	D	R	036		275	30	71		
80.0120.03701	30	225	00	08	120	D	R	037		275	30	71		
80.0160.03901	30	270	00	08	160	D	R	039		322	40	58		
80.0160.04001	30	270	25	08	160	D	R	040		322	40	58		
80.0160.04301	40	270	25	08	160	S	R	043		340	40	77,7		
80.0160.04401	40	270	00	08	160	S	R	044		340	40	77,7		
80.0160.04501	30	270	00	08	160	S	R	045		322	40	58		
80.0160.05101	40	270	00	08	160	D	R	051		335	40	77,		
80.0160.05201	40	245	00	08	160	D	F	052		305	40	77,		
80.0160.05501	30	190	00	08	160	D	F	055		240	40	68		

Code Codice	VDI	PCD	Y	N° Pos.	Turret Type	S D	F R	Drawing Disegno	PCD	De	d2	l1	Min	NOTE
	d1	D1	Offset						D2	D3				
									mm					
80.0160.05601	30	190	00	08	160	S	F	056		240	40	68		
80.0160.05701	40	245	25	08	160	D	F	057		305	40	65		
80.0160.05801	40	245	00	08	160	S	F	058		315	40	65		
80.0160.06301	30	270	35	08	160	D	R	063		322	40	58		
80.0160.06401	30	210	00	08	160	D	F	064		260	40	68		
80.0160.06701	50	290	00	08	160	D	F	067		363	40	80		
80.0160.07001	40	270	25	08	160	D	R	070		335	40	77,7		
80.0160.07501	40	350	00	08	160	D	F	075		405	40	66		
80.0160.07610	40	350	40	08	160	S	F	076		380	40	66		
80.0160.07801	40	270	00	08	160	D	F	078		340	40	65		
80.0200.06401	50	340	00	08	200	S	R	064		420	50	82		
80.0200.06601	40	340	00	08	200	S	R	066		410	50	66		
80.0200.06801	40	340	32	08	200	S	R	068		410	50	66		
80.0200.07301	40	340	00	08	200	D	R	073		410	50	66		
80.0200.07401	40	272	00	08	200	S	F	074		340	50	70		
80.0200.07701	50	340	00	08	200	D	R	077		420	50	82		
80.0200.07801	50	340	32	08	200	S	R	078		420	50	82		
80.0200.07901	50	272	35	08	200	S	F	079		355	50	80		
80.0200.08001	50	290	00	08	200	D	F	080		365	50	80		
80.0200.08101	40	245	00	08	200	S	F	081		305	50	78		
80.0200.08601	40	310	00	08	200	D	R	086		380	50	66		
80.0200.08801	50	290	35	08	200	S	F	088		375	50	82		
80.0200.09401	40	340	00	08	200	D	R	094		420	50	82		
80.0200.10801	40	340	32	08	200	D	R	108		410	50	82		
80.0200.11601	50	340	32	08	200	D	F	116		410	50	80		
80.0200.11901	40	290	00	08	200	D	F	119		360	50	66		
80.0200.12201	40	272	32	08	200	S	F	122		340	50			
80.0200.13301	50	340	32	08	200	D	R	133		410	50	82		
80.0250.01501	50	400	00	08	250	S	R	015		473	63	82		
80.0250.02901	50	340	35	08	250	S	F	029		420	63	82		
80.0250.04801	50	290	00	08	250	D	F	048		365	63	95		
80.0250.05601	60	400	00	08	250	S	R	056		490	63	115		
80.0250.07901	50	400	00	08	250	D	R	079		473	63	82		
80.0250.09401	50	290	00	08	250	S	F	094		365	63	95		
80.0320.03801	60	490	00	08	320	S	R	038		582	80	100		
80.0320.04001	60	490	00	08	320	D	R	040		582	80	100		
80.0400.02301	80	550	00	08	400	S	F	023		670	10	130		
80.0400.02701	80	620	00	08	400	S	R	027		740	10	130		
80.0400.02901	80	620	00	08	400	S	F	029		740	10	150		

F Suitable only for turrets with static tools
Utilizzabile solo per torrette con utensili fissi

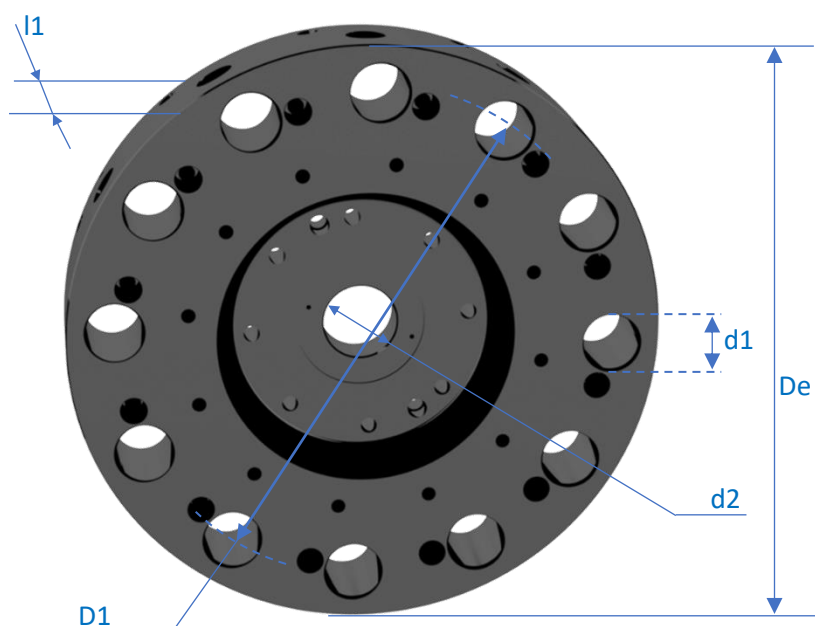
R Suitable for turrets with static tools and driven tools
Utilizzabile per torrette con utensili fissi e rotanti

On demand are available many other Tool Disc type or for special applications. Do not hesitate to contact our sales office.

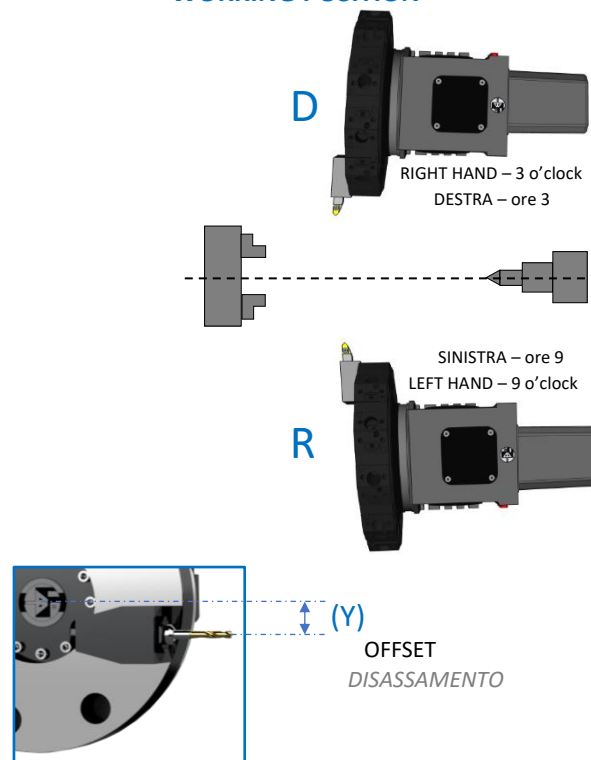
The List above indicates discs already produced but available for sale only at its sole discretion of Baruffaldi s.p.a., for this reason please contact our Sales Office for any question or request.

VDI Axial Tool Disc 12 positions for tool-holder as per ISO 10889 (ex DIN 69880)

VDI Dischi Assiali 8 posizioni per utensili a norma ISO 10889 (ex DIN 69880)



WORKING POSITION



Code Codice	VDI	PCD	Y	N°	Turret	S	F	Drawing	PCD	De	d2	l1	Min	NOTE
	d1	D1	Offset											
	mm			Pos.	Type	D	R	Disegno	mm					
80.0100.00101	16	190	15	12	100	D	R	001		230	25	48		
80.0120.00701	20	225	00	12	120	D	R	007		275	30	44		
80.0120.00901	25	225	00	12	120	D	R	009		275	30	52		
80.0120.01301	30	290	00	12	120	D	F	013		345	30	58		
80.0120.01501	20	240	00	12	120	D	R	015		290	30	44		
80.0120.02601	20	225	17	12	120	D	R	026		275	30	44		
80.0120.02901	30	270	00	12	120	D	F	029		322	30	56		
80.0120.03501	30	270	00	12	120	D	R	035		322	30	67		DIN5480
80.0160.01901	30	270	25	12	160	D	R	019		322	40	58		
80.0160.02601	30	270	00	12	160	D	R	026		322	40	58		
80.0160.03801	30	300	00	12	160	D	R	038		352	40	58		
80.0160.04901	20	270	25	12	160	D	R	049		322	40	43		
80.0160.06101	30	270	35	12	160	D	R	061		322	40	58		
80.0160.06601	30	270	00	12	160	S	R	066		322	40	58		
80.0160.07701	30	340	00	12	160	D	F	077		392	40	56		
80.0200.04201	40	340	00	12	200	D	R	042		410	50	66		
80.0200.04601	40	340	32	12	200	D	R	046		410	50	66		
80.0200.04701	40	380	80	12	200	D	R	047		450	50	66		
80.0200.06001	40	340	00	12	200	S	R	060		410	50	66		
80.0200.07601	40	340	32	12	200	S	R	076		410	50	66		
80.0200.08301	40	340	40	12	200	D	R	083		410	50	66		

Code Codice	VDI	PCD	X	N°	Turret	S	F	Drawing	PCD	De	d2	l1	Min	NOTE
	d1	D1	Offset											
mm														
80.0200.08901	40	380	00	12	200	D	R	089		450	50	66		
80.0200.09201	30	340	00	12	200	D	R	092		410	50	58		
80.0200.01101	50	400	00	12	250	D	R	011		473	63	82		
80.0250.01301	50	400	35	12	250	D	R	013		473	63	82		
80.0250.02801	50	400	00	12	250	S	R	028		473	63	82		
80.0250.04101	50	400	45	12	250	D	F	041		473	63	100		
80.0250.04301	50	400	35	12	250	S	R	043		473	63	82		
80.0250.01901	40	400	00	12	250	D	R	019		473	63	66		
80.0250.06001	50	400	50	12	250	D	R	060		473	63	82		
80.0250.06201	40	345	00	12	250	D	F	062		405	63	66		
80.0250.06301	50	400	20	12	250	D	F	063		473	63	82		
80.0250.05001	50	445	00	12	250	D	R	050		525	63	82		
80.0320.02701	60	476	00	12	320	D	F	027		570	80	95		
80.0320.03001	60	490	00	12	320	D	R	030		582	80	100		
80.0320.03501	60	490	00	12	320	S	R	035		582	80	100		
80.0320.03601	60	490	55	12	320	D	R	036		582	80	100		
80.0320.05501	60	490	55	12	320	S	R	055		582	80	100		
80.0400.01801	60	530	00	12	400	D	F	018		630	100	95		
80.0400.02201	80	620	00	12	400	D	R	022		740	100	130		
80.0400.02801	80	620	00	12	400	S	R	028		740	100	130		

F *Suitable only for turrets with static tools*
Utilizzabile solo per torrette con utensili fissi

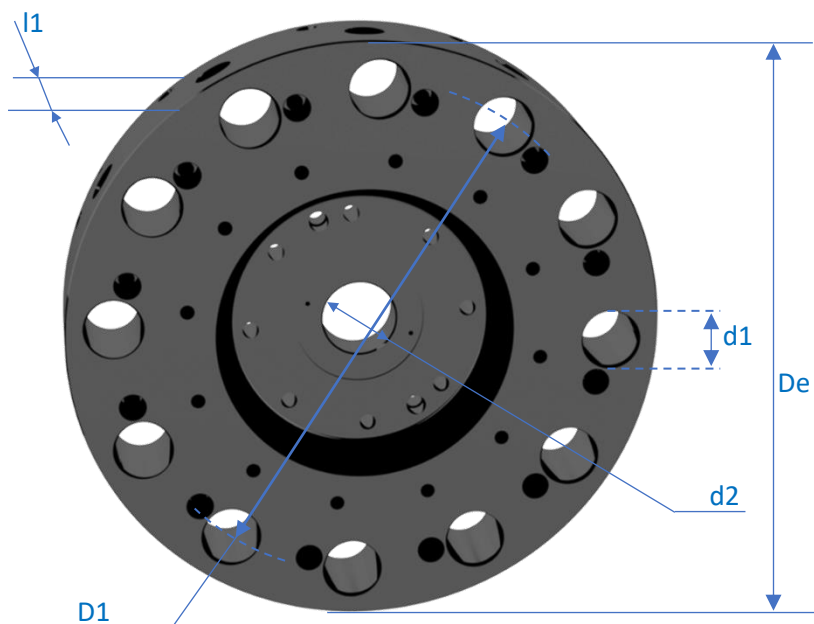
R *Suitable for turrets with static tools and driven tools*
Utilizzabile per torrette con utensili fissi e rotanti

On demand are available many other Tool Disc type or for special applications. Do not hesitate to contact our sales office.

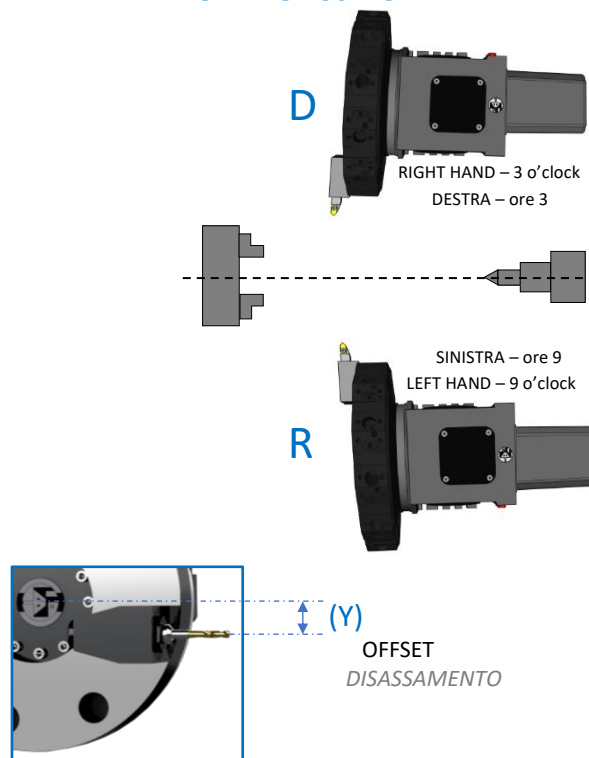
The List above indicates discs already produced but available for sale only at its sole discretion of Baruffaldi s.p.a., for this reason please contact our Sales Office for any question or request.

VDI Axial Tool Disc 16 positions for tool-holder as per ISO 10889 (ex DIN 69880)

VDI Dischi Assiali 16 posizioni per utensili a norma ISO 10889 (ex DIN 69880)



WORKING POSITION



Code Codice	VDI	PCD	Y	N° Pos.	Turret Type	S D	F R	Drawing Disegno	PCD D2	De	d2	l1	Min D3	NOTE
	d1	D1	Offset											
80.0200.10101	30	380	00	16	200	D	R	101		450	50	58		
80.0200.16101	30	380	00	16	200	S	R	161		450	50	58		
80.0250.04201	50	500	00	16	250	D	F	042		585	63	80		
80.0250.	40	400	00	16	250	S	R			473	63	66		

F Suitable only for turrets with static tools

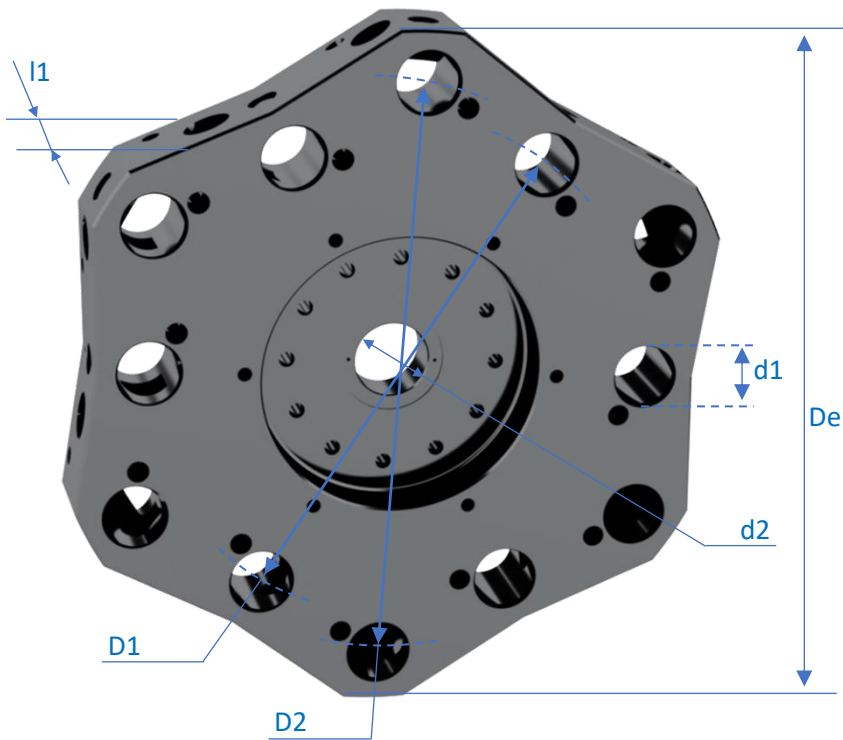
Utilizzabile solo per torrette con utensili fissi

R Suitable for turrets with static tools and driven tools

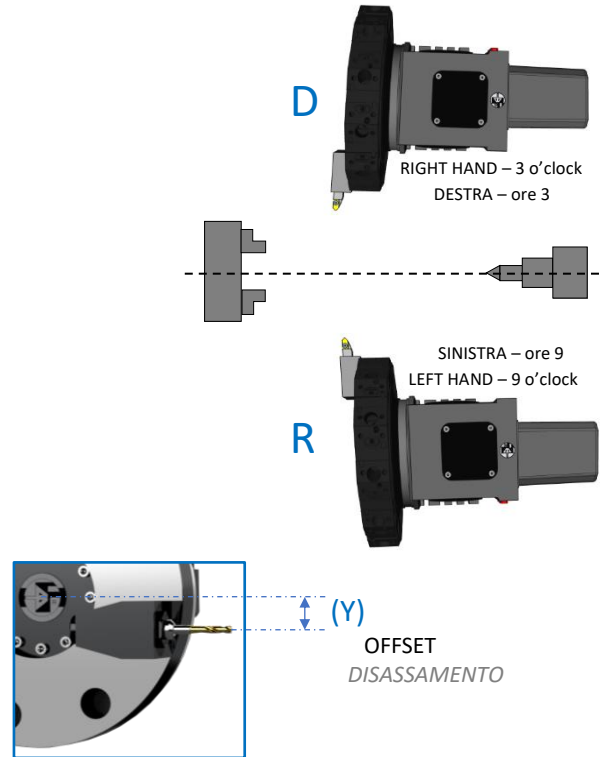
Utilizzabile per torrette con utensili fissi e rotanti

On demand are available many other Tool Disc type or for special applications. Do not hesitate to contact our sales office.

The List above indicates discs already produced but available for sale only at its sole discretion of Baruffaldi s.p.a., for this reason please contact our Sales Office for any question or request.



WORKING POSITION



Code Codice	VDI	PCD	Y	N° Pos.	Turret Type	S	F	Drawing Disegno	PCD	De	d2	l1	Min D3	NOTE
	d1	D1	Offset						D2					
80.0120.04101	20	200	00	12	120	D	F	041	240	275	30	42		
80.0160.03701	30	270	00	12	160	D	R	037	335	390	40	58		
80.0160.04601	30	270	22	12	160	D	F	046	335	400	40	56		
80.0160.04801	30	270	25	12	160	D	F	048	335	390	40	58		
80.0160.11901	30	270	00	12	160	D	R	119	300	346	40	67		DIN5480
80.0200.05301	40	340	00	12	200	D	R	053	400	470	50	66		
80.0200.08701	40	310	25	12	200	D	F	087	360	446	50	65		
80.0200.11501	40	340	32	12	200	D	R	115	400	470	50	66		
80.0250.02601	50	400	00	12	250	D	R	026	460	540	63	82		
80.0250.02701	40	400	00	12	250	D	R	027	460	540	63	66		
80.0250.06401	40	380	80	12	250	D	F	064	450	520	63	65		
80.0250.08301	50	400	00	12	250	D	R	083	510	590	63	82		
80.0250.16401	50	400	32	12	250	D	F	164	460	540	63	82		
80.0250.16501	50	400	00	12	250	S	R	165	460	540	63	82		
80.0320.03401	60	490	00	12	320	D	R	034	570	662	80			
80.0400.03001	60	620	00	12	400	D	R	030	830	920				

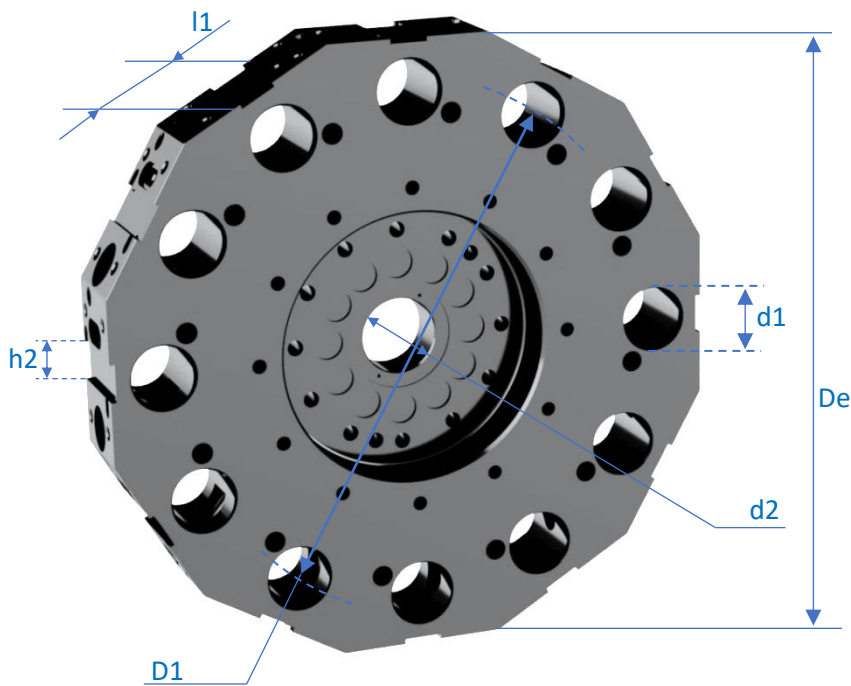
F Suitable only for turrets with static tools
Utilizzabile solo per torrette con utensili fissi

R Suitable for turrets with static tools and driven tools
Utilizzabile per torrette con utensili fissi e rotanti

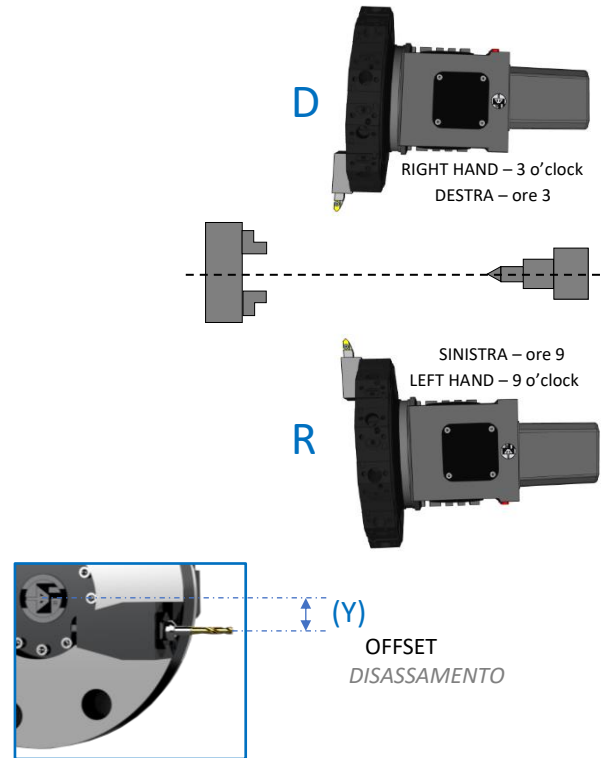
On demand are available many other Tool Disc type or for special applications. Do not hesitate to contact our sales office.
The List above indicates discs already produced but available for sale only at its sole discretion of Baruffaldi s.p.a., for this reason please contact our Sales Office for any question or request.

VDI Axial Tool Disc (as per ISO 10889) + Side Square Seats 8-12 positions

VDI Dischi Assiali (a norma ISO 10889) + Sedi quadre laterali 8-12 posizioni



WORKING POSITION



Code Codice	VDI	PCD	Y	Swing	N°	Turret	S	F	Drawing	h2	d2	l1	NOTE
	d1	D1	Offset	Chiave									
80.0120.	20	225	00		12	120	D	R		16	30		
80.0120.	20	240	00		12	120	D	R		16	30		
80.0160.08001	30	270	00	340	12	160	D	R	080	20	40	58	
80.0160.08401	30	270	00	340	12	160	D	R	084	20	40	67	DIN5480
80.0160.10001	40	270	00	335	8	160	D	R	100	25	40	66	DIN1809
80.0200.13401	40	340	00	410	12	200	D	R	134	25	50	66	
80.0200.13901	40	380	00	450	12	200	D	R	139	25	50	66	
80.0200.17301	50	380	00	410	8	200	S	R	173	25	50	66	
80.0200.17901	40	340	00	410	12	200	S	R	179	25	50	66	
80.0250.08801	50	420	00	498	12	250	D	F	088	25	63		
80.0250.08901	50	400	35	496	12	250	D	R	089	32	63		
80.0250.09001	50	400	00	478	12	250	D	R	090	25	63		
80.0250.16301	50	400	00	496	12	250	D	R	163	32	82		
80.0250.17001	60	400	00	496	08	250	D	R	170	32	117		
80.0250.17501	50	445	35	525	12	250	D	R	170	32	82		
80.0320.05601	60	490	55	660	12	320	D	R	056	40	80		
80.0320.05901	60	490	00	610	12	320	S	R	059	32	80	100	
80.0320.04101	60	490	00	610	12	320	D	R	095	32	80	100	

F Suitable only for turrets with static tools
Utilizzabile solo per torrette con utensili fissi

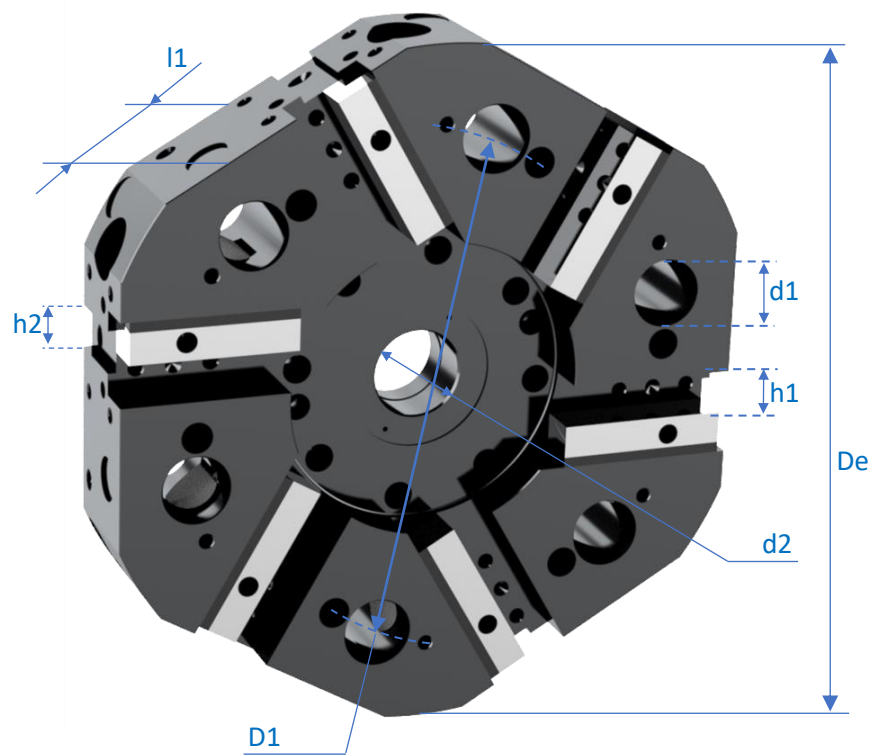
R Suitable for turrets with static tools and driven tools
Utilizzabile per torrette con utensili fissi e rotanti

On demand are available many other Tool Disc type or for special applications. Do not hesitate to contact our sales office.

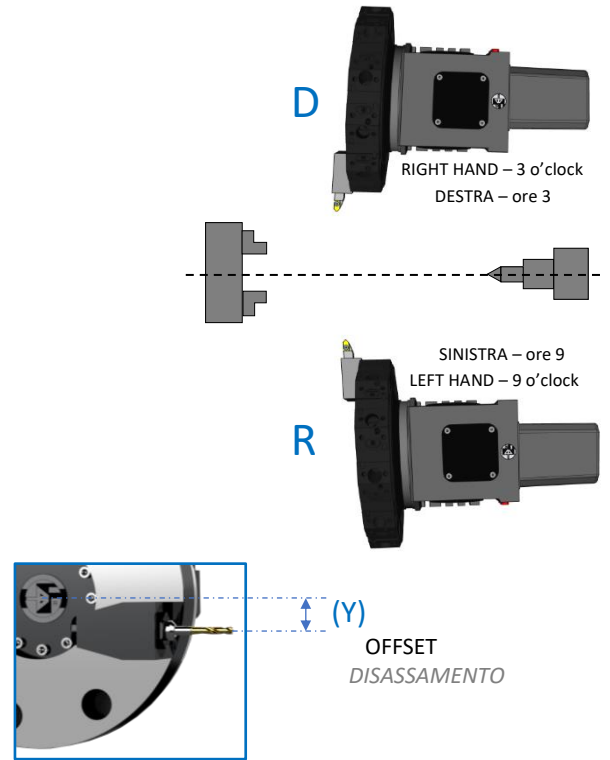
The List above indicates discs already produced but available for sale only at its sole discretion of Baruffaldi s.p.a., for this reason please contact our Sales Office for any question or request.

VDI Axial Tool Disc (as per ISO 10889) + Side and Frontal Square Seats 8-12 positions

VDI Dischi Assiali (a norma ISO 10889) + Sedi quadre laterali e Frontali 8-12 posizioni



WORKING POSITION



Code Codice	VDI	PCD	Y	Swing	N° Pos.	Turre Type	S	F	Drawing Disegno	h1	h2	d2	l1
	d1	D1	Offset	Chiave						mm			mm
80.0160.10801	30	240	25	300	12	160	D	F	108	20	20	40	68
80.0160.11301	30	270	35	330	12	160	D	R	113	20	20	40	58
80.0160.12701	30	270	25	330	12	160	D	R	127	20	20	40	58
80.0200.	40	340	00	410	12	200	D	R		25	25	50	66

F Suitable only for turrets with static tools
Utilizzabile solo per torrette con utensili fissi

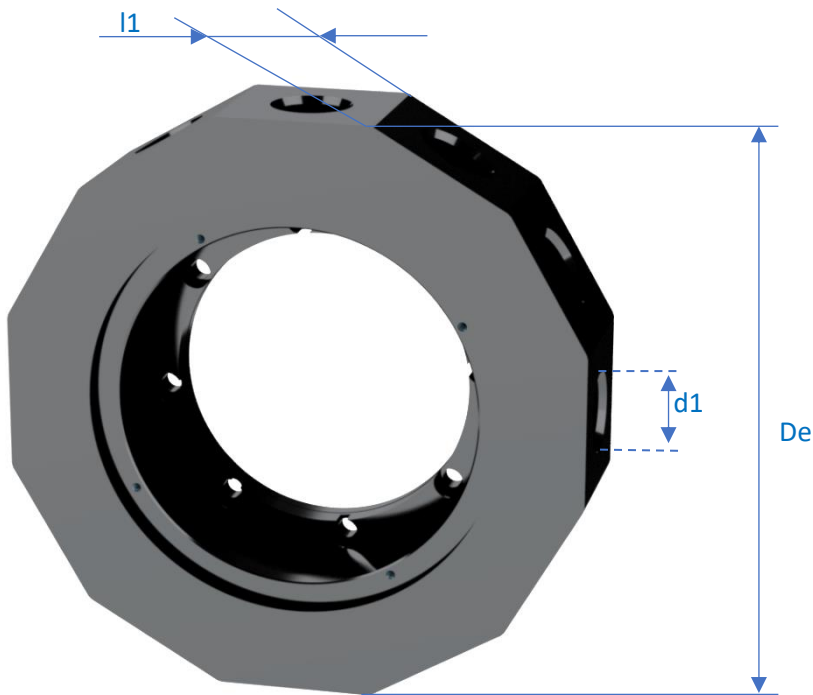
R Suitable for turrets with static tools and driven tools
Utilizzabile per torrette con utensili fissi e rotanti

On demand are available many other Tool Disc type or for special applications. Do not hesitate to contact our sales office.

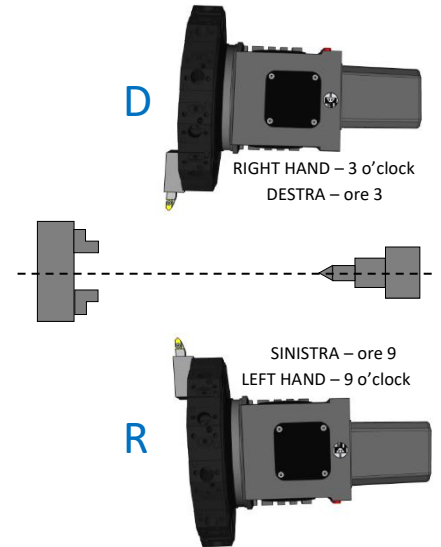
The List above indicates discs already produced but available for sale only at its sole discretion of Baruffaldi s.p.a., for this reason please contact our Sales Office for any question or request.

VDI Radial Tool Disc 8-12-16 positions for tool-holder as per ISO 10889 (ex DIN 69880)

VDI Dischi Radiali 8-12-16 posizioni per utensili a norma ISO 10889 (ex DIN 69880)



WORKING POSITION



Code Codice	VDI	Swing	Y	N° Pos.	Turret Type	S D	F R	Drawing Disegno	NOTE	l1
	d1	Chiave mm	Offset							mm
80.0120.05101	20	224	00	12	120	S	R	051		54
80.0120.05701	25	240	00	12	120	D	R	057	DIN5480	96
80.0120.06201	25	240	00	8	120	D	R	062	DIN5480	96
80.0120.03801	25	320	00	12	120	D	R	038		60
80.0160.07101	30	270	00	12	160	D	R	071		70
80.0160.09301	30	270	00	12	160	S	R	093		70
80.0160.	30	340	00	12	160	D	R			70
80.0160.12601	30	270	00	12	160	D	R	126	DIN5480	110
80.0200.10301	40	320	00	12	200	D	R	103		85
80.0200.	40	320	00	12	200	S	R			85
80.0200.10401	40	380	00	12	200	D	R	104		85
80.0200.16701	40	320	00	08	200	D	R	167		85
80.0200.13701	30	320	00	12	200	D	R	137		85
80.0200.11701	30	380	00	16	200	D	R	117		85
80.0250.06901	50	380	00	12	250	D	R	069		100
80.0250.07001	50	380	00	12	250	S	R	070		100
80.0250.07101	40	348	00	12	250	D	R	071		92,5
80.0250.07201	50	420	00	12	250	S	R	072		130
80.0250.05501	50	420	00	12	250	S	R	055		100

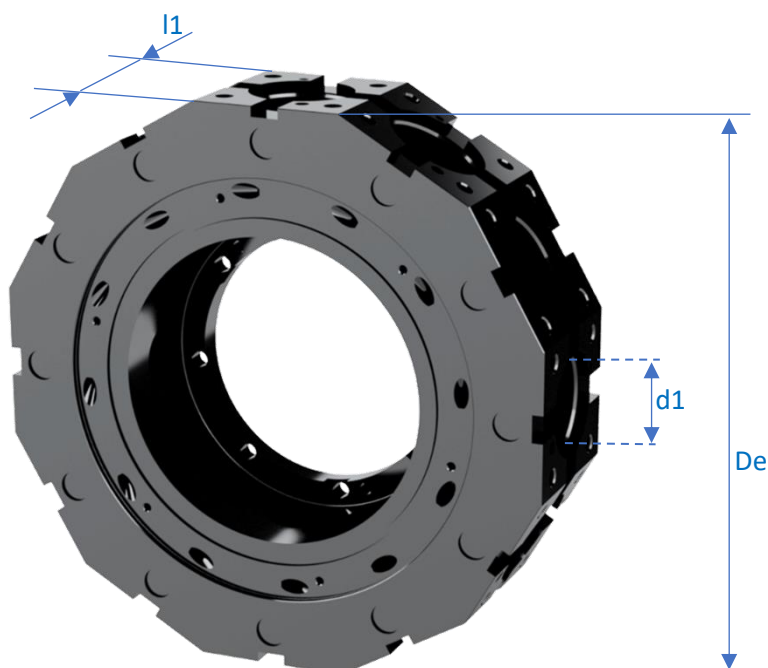
Code Codice	VDI	Swing	Y	N° Pos.	Turret Type	S D	F R	Drawing Disegno	NOTE	l1	
	d1	Chiave	Offset							mm	
80.0320.03101	60	500	00	12	320	D	R	031		125	
80.0320.	60	500	00	12	320	S	R			125	
80.0320.04201	50	480	00	12	320	D	R	042		100	
80.0320.04301	60	500	00	08	320	D	R	043		125	
80.0320.04401	60	500	00	08	320	S	R	044		125	
80.0320.04601	60	500	00	12	320	S	R	046		190	

F *Suitable only for turrets with static tools*
Utilizzabile solo per torrette con utensili fissi

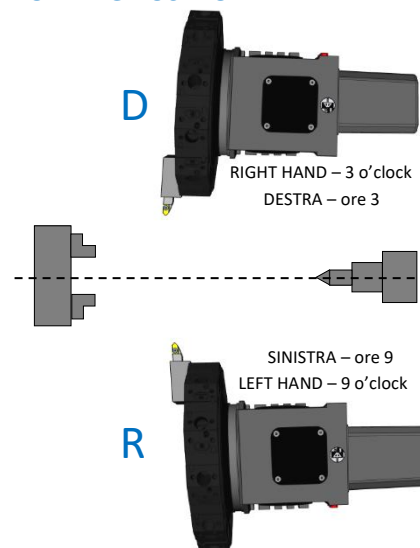
R *Suitable for turrets with static tools and driven tools*
Utilizzabile per torrette con utensili fissi e rotanti

On demand are available many other Tool Disc type or for special applications. Do not hesitate to contact our sales office.

The List above indicates discs already produced but available for sale only at its sole discretion of Baruffaldi s.p.a., for this reason please contact our Sales Office for any question or request.



WORKING POSITION



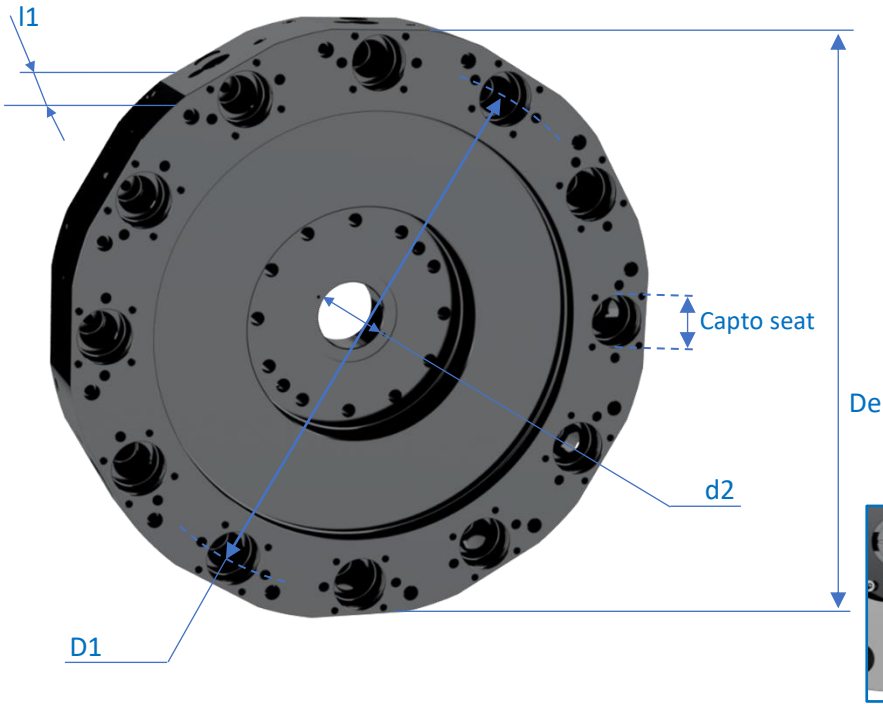
Code Codice	VDI d1	Swing Chiave	N° Pos.	Turret Type	S D	F R	Drawing Disegno	NOTE	l1
	mm								mm
80.0160.09201	45	290	12	160	D-S	R	092		90
80.0160.10501	55	320	12	160	D-S	R	105		100
80.0160.11501	55	320	12	160	D-S	F	115		100
80.0200.15601	55	350	12	200	D-S	R	156		100
80.0200.14701	65	365	12	200	D-S	R	147		110
80.0200.17101	65	365	12	200	D-S	F	171		110
80.0200.17201	45	290	12	200	D-S	F	172		90
80.0250.09901	65	365	12	250	D-S	R	099		110
80.0250.10001	75	430	12	250	D-S	R	100		125
80.0320.05801	75	430	12	320	D-S	R	058	SHORT NECK VER.	125
80.0320.05201	85	530	12	320	D-S	R	052	SHORT NECK VER.	140
80.0320.05401	85	720	12	320	D-S	R	054	SHORT NECK VER.	140
80.0320.06201	85	530	12	320	D-S	R	062	SHORT NECK VER. SHORT NECK VER. WITH FRONTAL THREAD	140
80.0320.05501	85	530	12	320	D-S	R	055	LONG NECK VER.	140

F Suitable only for turrets with static tools
Utilizzabile solo per torrette con utensili fissi

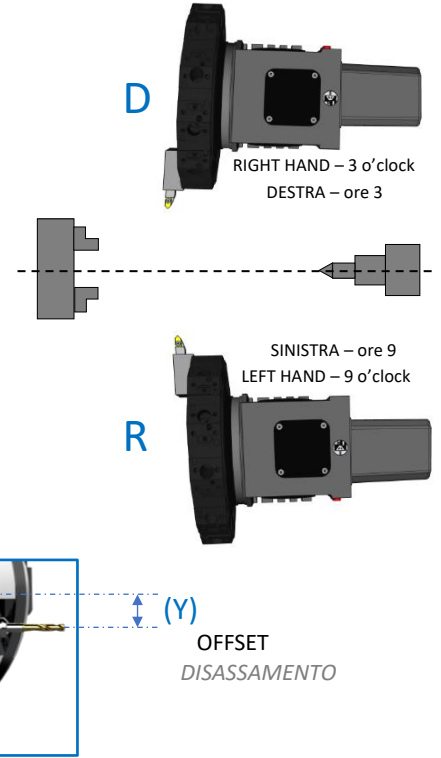
R Suitable for turrets with static tools and driven tools
Utilizzabile per torrette con utensili fissi e rotanti

On demand are available many other Tool Disc type or for special applications. Do not hesitate to contact our sales office.

The List above indicates discs already produced but available for sale only at its sole discretion of Baruffaldi s.p.a., for this reason please contact our Sales Office for any question or request.



WORKING POSITION



Code Codice	Capto	D1	Y	Swing	N° Pos.	Turret Type	S D	F R	Drawing Disegno	l1	d2	NOTE
		PCD	Offset	Chiave								
80.0160.	C4	270	00	340	8	160	D-S	F		80	40	
80.0200.14001	C5	290	00	358	8	200	D-S	F	140	95	50	
80.0200.14301	C5	376	00	440	8	200	D-S	F	143	104	50	
80.0200.14601	C4	390	00	438	12	200	D-S	F	146	80	50	
80.0200.15001	C6	430	00	515	12	200	D-S	F	150	110	50	double coolant
80.0200.15101	C5	430	00	515	12	200	D-S	F	151	95	50	double coolant
80.0200.15801	C6	330	00	415	8	200	D-S	F	158	110	50	double coolant
80.0200.18701	C5	272	32	329	8	200	D-S	F	187	95	50	
80.0250.09301	C5	340	00	405	8	250	D-S	F	093	90	63	
80.0250.10101	C6	440	00	525	12	250	D-S	F	101	110	63	
80.0250.15901	C6	400	00	485	8	250	D-S	F	159	110	63	
80.0320.06301	C8	490	00	590	8	320	D-S	F	063	130	80	
80.0320.08401	C6	450	00	530	8	320	D-S	F	084	120	80	
80.0320.09201	C6	684	00	784	12	320	D-S	F	092	130	80	
80.0320.06801	C6	460	00	615	12	320	D-S	F	068	120	80	double PCD

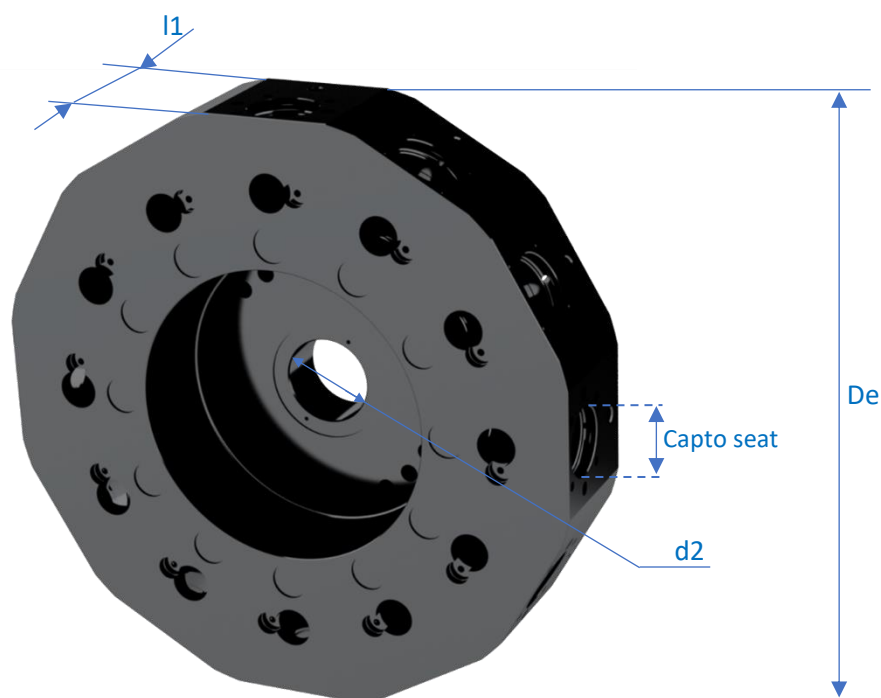
F Suitable only for turrets with static tools
Utilizzabile solo per torrette con utensili fissi

R Suitable for turrets with static tools and driven tools
Utilizzabile per torrette con utensili fissi e rotanti

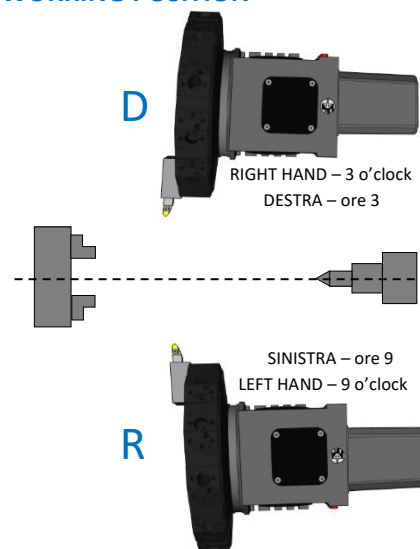
On demand are available many other Tool Disc type or for special applications. Do not hesitate to contact our sales office.
The List above indicates discs already produced but available for sale only at its sole discretion of Baruffaldi s.p.a., for this reason please contact our Sales Office for any question or request.

Discs with Capto Radial Seats – 8/12 positions

Dischi con sedi Capto Radiali – 8/12 posizioni



WORKING POSITION



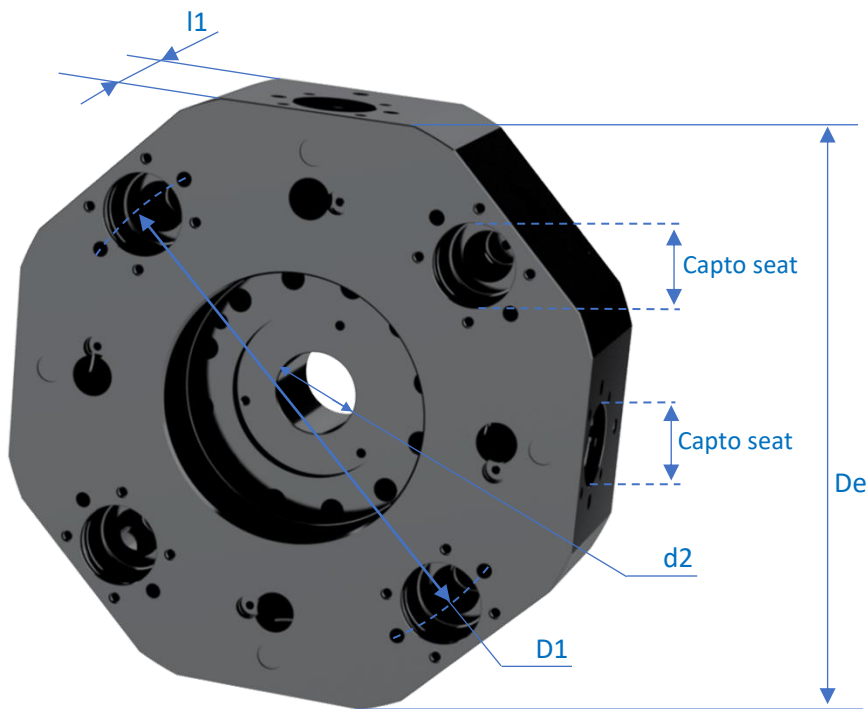
Code Codice	Capto Seat	Y Offset	Swing Chiave	N° Pos.	Turret Type	S D	F R	Drawing Disegno	l1	d2	NOTE
80.0160.12001	C4	20	280	12	160	D-S	F	120	75	40	
80.0200.14501	C4	00	350	12	200	D-S	F	145	80	50	
80.0200.16201	C4	00	320	12	200	D-S	F	162	95	50	
80.0250.08601	C5	00	338	12	250	D-S	F	086	100	63	
80.0250.08701	C5	00	378	12	250	D-S	F	087	100	63	
80.0320.06401	C8	00	530	8	320	D-S	F	064	130	80	
80.0320.10701	C8	00	740	16	320	D-S	F	107	130	80	
80.0400.05501	C8	00	720	12	400	D-S	F	055	130	10	

F Suitable only for turrets with static tools
Utilizzabile solo per torrette con utensili fissi

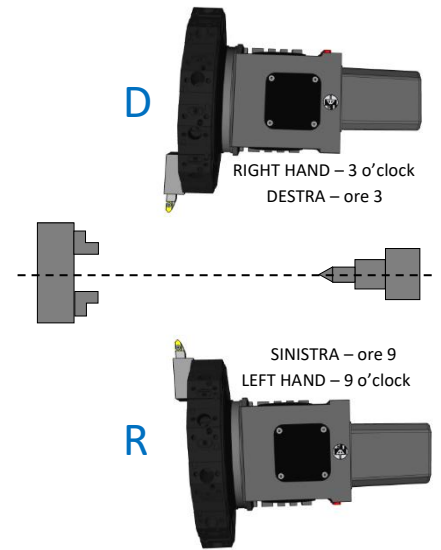
R Suitable for turrets with static tools and driven tools
Utilizzabile per torrette con utensili fissi e rotanti

On demand are available many other Tool Disc type or for special applications. Do not hesitate to contact our sales office.

The List above indicates discs already produced but available for sale only at its sole discretion of Baruffaldi s.p.a., for this reason please contact our Sales Office for any question or request.



WORKING POSITION



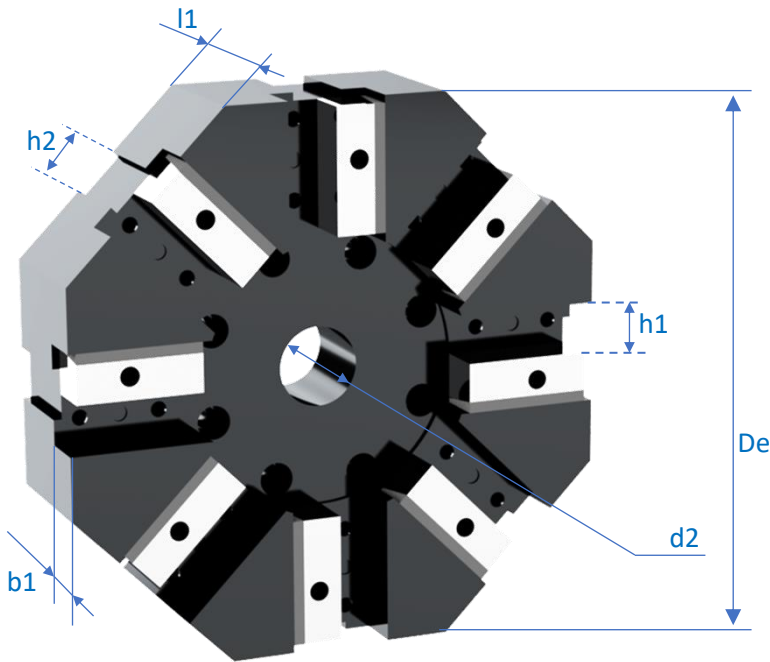
Code Codice	Capto	PCD D1	Y Offset	Swing Chiave	N° Pos. RAD+AXI	Turret Type	S D	F R	Drawing Disegno	l1	d2	NOTE
		mm								mm		
80.0200.18101	C5	290	00	354	4+4	200	DS	F	181	95	50	
80.0250.19001	C5	446	00	530	8+4	250	D	F	190	130	63	
80.0320.07401	C6	445	00	530	6+6	320	D	F	074	120	80	
80.0320.06601	C8	445	00	575	6+6	320	D	F	066	130	80	

F Suitable only for turrets with static tools
Utilizzabile solo per torrette con utensili fissi

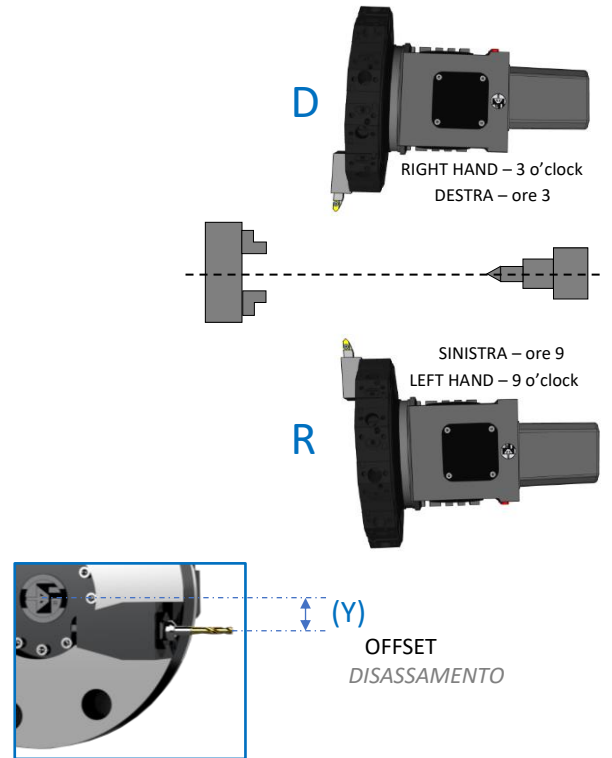
R Suitable for turrets with static tools and driven tools
Utilizzabile per torrette con utensili fissi e rotanti

On demand are available many other Tool Disc type or for special applications. Do not hesitate to contact our sales office.

The List above indicates discs already produced but available for sale only at its sole discretion of Baruffaldi s.p.a., for this reason please contact our Sales Office for any question or request.



WORKING POSITION



Code Codice	h1	Ch	Y Offset	N° Pos.	Turret Type	S	F	Drawing Disegno	d1	h2	d2	b1	l1	f1
	mm					D	R		mm					
999.231.	20	220	00	08	120	D-S	F	A	32	20	30	20	61	25
999.231.09511	25	275	00	08	160	D-S	F	A	40	25	40	25	76	30
999.231.07996	32	350	00	08	200	D-S	F	A	50	32	50	32	96	35
999.231.09502	40	450	00	08	250	D-S	F	A	60	40	63	40	126	40
999.231.09531	40	530	00	08	320	D-S	F	A	60	40	63	40	126	40

F Suitable only for turrets with static tools
Utilizzabile solo per torrette con utensili fissi

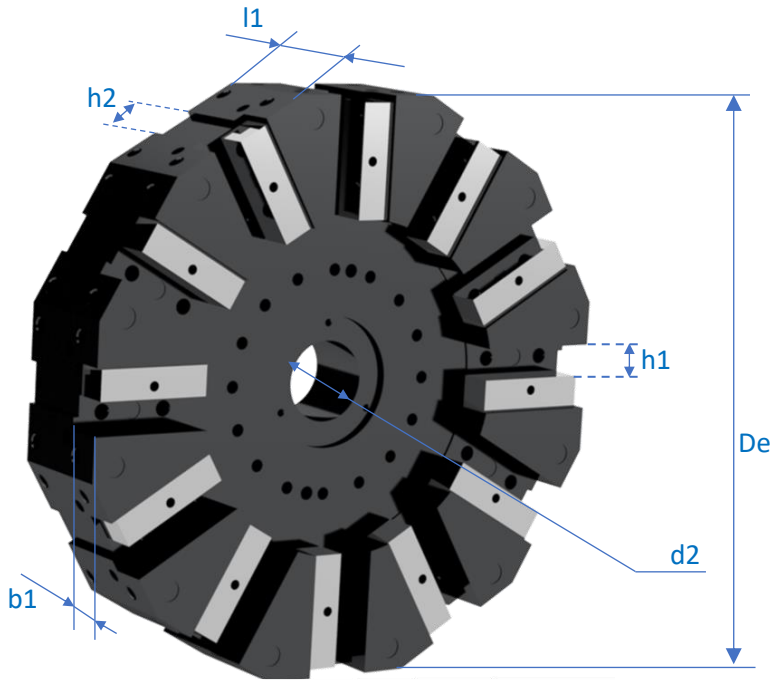
R Suitable for turrets with static tools and driven tools
Utilizzabile per torrette con utensili fissi e rotanti

On demand are available many other Tool Disc type or for special applications. Do not hesitate to contact our sales office.

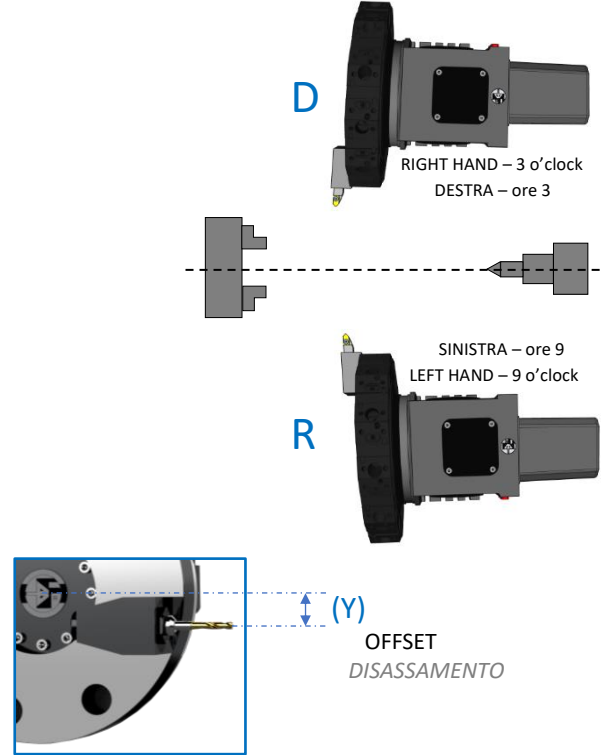
The List above indicates discs already produced but available for sale only at its sole discretion of Baruffaldi s.p.a., for this reason please contact our Sales Office for any question or request.

Polygonal Discs with Side+Frontal Square Seats 12 positions

Dischi Poligonali con Sedi quadre Laterali+Frontali 12 posizioni



WORKING POSITION



Code Codice	h1	De	Y	N° Pos.	Turret Type	S D	F R	Drawing Disegno	d1	h2	d2	b1	l1	f1
	mm	mm	Offset						mm					
999.231.09529	16	280	00	12	120	D-S	F	A	25	16	30	16	51	23
999.231.09501	20	278	00	12	160	D-S	F	A	32	20	40	20	61	25
999.231.09509	25	345	00	12	200	D-S	F	A	40	25	50	25	76	30
999.231.09517	32	435	00	12	250	D-S	F	A	50	32	63	32	96	35
999.231.	32	530	00	12	320	D-S	F	A	50	32	80	32	96	35
999.231.09530	32	565	00	12	320	D-S	F	A	60	40	80	40	126	40

F Suitable only for turrets with static tools
Utilizzabile solo per torrette con utensili fissi

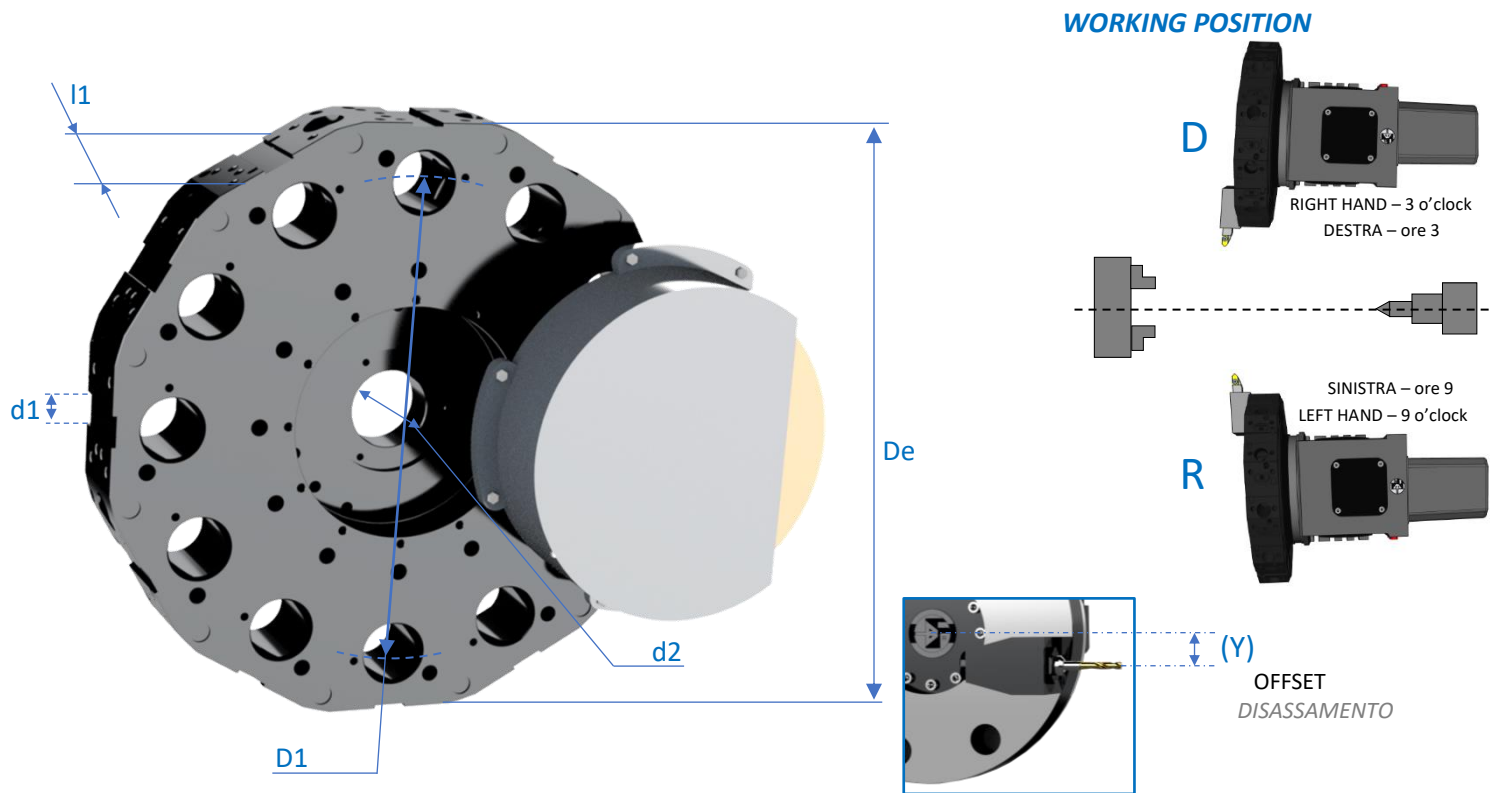
R Suitable for turrets with static tools and driven tools
Utilizzabile per torrette con utensili fissi e rotanti

On demand are available many other Tool Disc type or for special applications. Do not hesitate to contact our sales office.

The List above indicates discs already produced but available for sale only at its sole discretion of Baruffaldi s.p.a., for this reason please contact our Sales Office for any question or request.

Special Disc VDI (as per ISO 10889) + Grinding Unit suitability

Dischi Speciali VDI (a norma ISO 10889) + predisposizione Unità di Rettifica



Code Codice	VDI	PCD	Y	N° Pos.	Turret Type	S	F	Drawing Disegno	PCD	D	d2	l1	d1	NOTE
	d1	D1	Offset						D2					
80.0320.032101	60	490	00	12	320	D	R	032		582	80	100		
80.0320.03301	60	490	00	12	320	S	R	033		582	80	100		
80.0320.08601	60	490	00	12	320	S	R	086		610	80	100	32	PU32
80.0400.02401	80	620	00	12	400	D	R	024		740	100	130		
80.0400.02501	80	620	00	12	400	S	R	025		740	100	130		
80.0400.04401	60	620	00	12	400	S	R	044		740	100	130		

F Suitable only for turrets with static tools

Utilizzabile solo per torrette con utensili fissi

R Suitable for turrets with static tools and driven tools

Utilizzabile per torrette con utensili fissi e rotanti

On demand are available many other Tool Disc type or for special applications. Do not hesitate to contact our sales office.

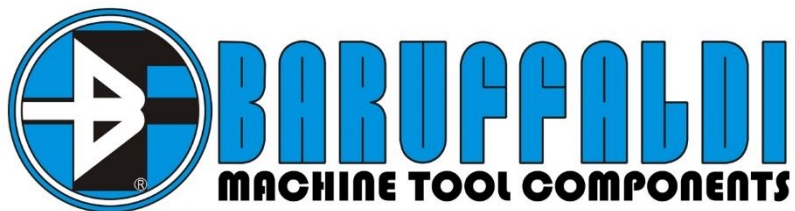
The List above indicates discs already produced but available for sale only at its sole discretion of Baruffaldi s.p.a., for this reason please contact our Sales Office for any question or request.



Baruffaldi has developed a sales and service organisation all over the world. Furthermore, thanks to a net of agents and distributors, it is ensured a direct contact in many nations.

La Baruffaldi è strutturata per offrire un servizio di vendita e assistenza in tutto il mondo. Inoltre grazie ad una rete di agenti e distributori garantisce un contatto diretto in molte nazioni.

Visit our web site for more information
WWW.BARUFFALDI.IT



Via Cassino D'Alberi 16, 20067 Tribiano (Milan) ITALY
Tel +39 02906090 987 Fax +39 02906090 15 Email Sales.mtc@baruffaldi.it

WWW.BARUFFALDI.IT



[Facebook.com/BaruffaldiSpa](https://www.facebook.com/BaruffaldiSpa)



[Instagram.com/Baruffaldi_Spa](https://www.instagram.com/Baruffaldi_Spa)



[Youtube.com/Baruffaldispa](https://www.youtube.com/Baruffaldispa)



www.linkedin.com/company/baruffaldi-spa